



PRODUCT GUIDE

Series	Size	Electrical Angle	Mechanical Angle	Technology	Electrical Law	PCB Mount	Nominal Resistance	Standard Tolerance	Max. Power Dissipation (50°C)	Max. Voltage	Mechanical Life (max.)	Oper. T°	Detents for feeling effect (max.)	Detents for output value discrimination (max.)	
CA6	6mm	215±20°	235±5°	Carbon	Linear	THT, SMD	100Ω-5MΩ, 100Ω-1MΩ	±20%	0.10W	100VDC	1.000	-25°C...+70°C (+85°C inquiry)	-	-	
					Log or Antilog		1KΩ-2M2Ω, 1KΩ-1MΩ	±25%	0.06W	60VDC					
CA-CE9 MCA*-MCE9*	9mm	220±20°	240±5°	Carbon	Linear	THT, SMD	100Ω-5MΩ, 100Ω-1MΩ	±20%, ±30%	0.15W	150VDC	10.000	-25°C...+70°C (+85°C inquiry)	20	10	
					Log or Antilog		1KΩ-2M2Ω, 1KΩ-1MΩ		0.10W	200VDC					
				Cermet	Linear		100Ω-5MΩ	±20%	0.50W	200VDC					-40°C...+90°C (+125°C inquiry)
					Log or Antilog		1KΩ-2M2Ω		0.20W						
CA-CE14 MCA*-MCE14* CAR*-CER14*	14mm	245±20°	265±5°	Carbon	Linear	THT, SMD	100Ω-5MΩ, 100Ω-1MΩ	±20%, ±30%	0.25W	250VDC	10.000	-25°C...+70°C (up to +120°C, inquiry)	38	14	
					Log or Antilog		1KΩ-2M2Ω, 1KΩ-1MΩ		0.13W	150VDC					
				Cermet	Linear		100Ω-5MΩ	±20%	0.70W	250VDC					-40°C...+90°C (+125°C inquiry)
					Log or Antilog		1KΩ-2M2Ω		0.30W						
RS9	9mm	220±20°	245±5°	Carbon	Linear	THT, SMD	10KΩ (standard)	±30%	0.15W	200VDC	200.000	-25°C...+70°C (+85°C inquiry)	-	-	
RS14 RSR14*	14mm	245±20°	265±5°	Carbon	Linear	THT, SMD	10KΩ (standard)	±30%	0.15W	250VDC	250.000	-25°C...+70°C (up to +120°C, inquiry)	-	-	
CS14 MCS14*	14mm	330±20°	360±5°	Carbon	Linear	THT, SMD	1KΩ-5MΩ, 1KΩ-1MΩ	±30%	0.15W	250VDC	250.000	-25°C...+70°C (up to +120°C, inquiry)	50	16	
Q16	16mm	330±20°	360±5°	Carbon	Linear	THT	10KΩ (standard)	±30%	0.15W	250VDC	10.000	-25°C...+70°C (others inquiry)	16	16	
QJ16	16mm	245±20°	90±5°	Carbon	Linear	THT	10KΩ (standard)	±30%	0.15W	250VDC	10.000	-25°C...+70°C (others inquiry)	-	-	

* Only THT

PRODUCT GUIDE

Potentiometers



CA6

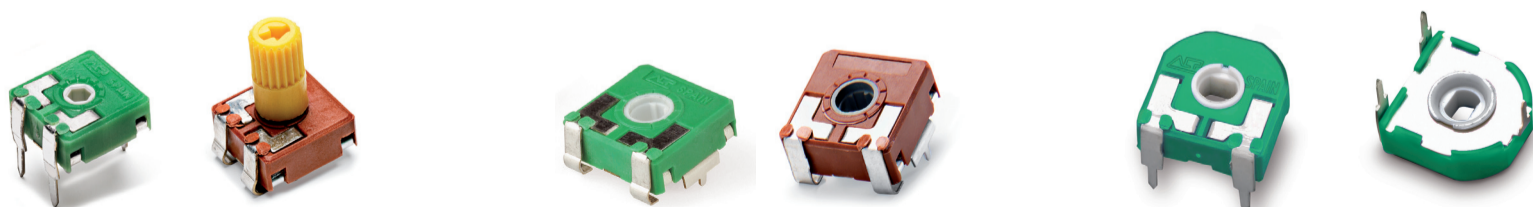
CA-CE9

CA-CE14

CAR-CER14

MCA-MCE9 / MCA-MCE14

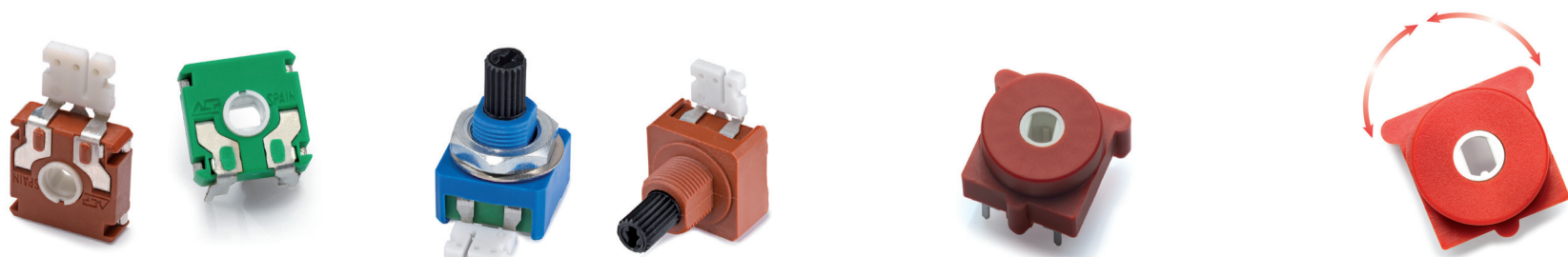
Sensors



RS9

RS14

RSR14



CS14

MCS14

Q16

QJ16